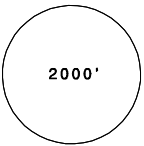
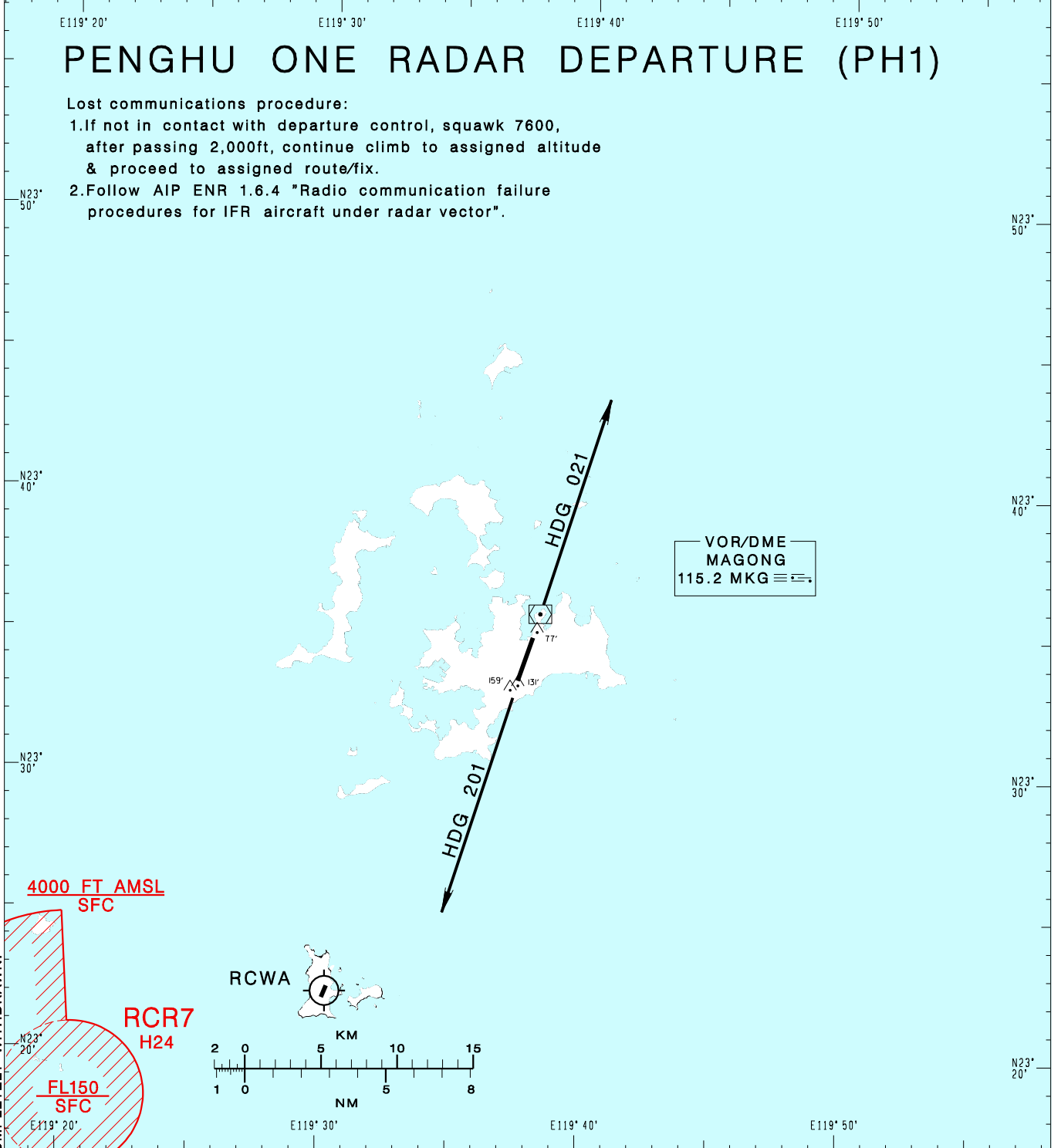


KAOHSIUNG APP 128.1 234.8	MAGONG TWR 118.3 236.6	ATIS 127.05	VAR 3° W ↑	 2000' MSA MKG VOR 25NM
Apt Elev: 103'		Trans Level: FL130		
BEARINGS ARE MAGNETIC; DISTANCES ARE NAUTICAL MILES; ELEVATIONS, HEIGHTS IN FEET				

PENGHU ONE RADAR DEPARTURE (PH1)

Lost communications procedure:

1. If not in contact with departure control, squawk 7600, after passing 2,000ft, continue climb to assigned altitude & proceed to assigned route/fix.
2. Follow AIP ENR 1.6.4 "Radio communication failure procedures for IFR aircraft under radar vector".



CHANGES: BM NDB COMPLETELY WITHDRAWN.

<p>RWY02: Depart HDG 021, climb to ATC assigned altitude for vector to assigned route/fix.</p>	<p>Note: Caution close-in obstacles (trees, poles & water tower): 159ft MSL, 794m & 131ft MSL, 292m south of THR02; 77ft MSL, 436m north of THR20.</p>
<p>RWY20: Depart HDG 201, climb to ATC assigned altitude for vector to assigned route/fix.</p>	